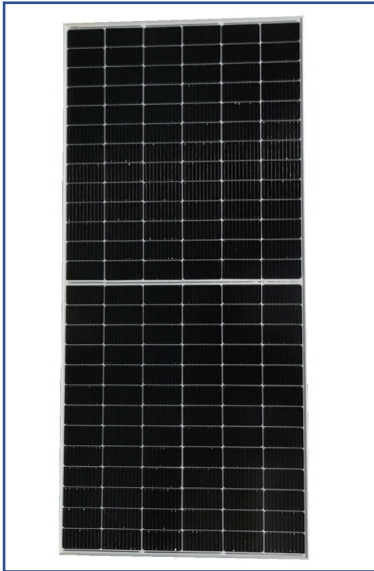


HT78-18X

NEW Large wafer

585W/590W
595W/600W/605W



- Module Efficiency: 21.6%
- No. of Cells 156(6×26)
- Weight 30.5kg
- Dimensions 2470mm×1134mm×35mm
- monocrystalline 182×91mm



Shanghai Aerospace Automobile Electromechanical Co., Ltd.
Website: www.ht-saae.com
E-mail: pvmarketing@ht-saae.com



Factory:
Lianyungang Shenzhou New Energy CO., Ltd.
Turkey HT Solar Energy Joint Stock Company



Half cut cell technology can reduce the internal power loss and improve component overall power. Excellent heat dissipation avoids hot spot production.



The optimized number and width of main gate lines, Maximize the light receiving area of components and Reduce component power consumption.



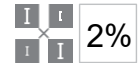
Designed for high voltage systems of up to 1500 VDC, increasing the string length of solar systems and saving on BoS costs

12Ys

Products warranty

25Ys

Warranty on power output



All the modules are sorted and packaged by amperage, reducing mismatch losses and maximizing system output.

EL

Microcrack resistant Double glass structure enhance reliability, triple EL tested of high quality control.

5W

Positive tolerance 0/+5w guaranteed



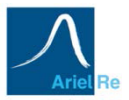
Entire module certified to with stand extreme wind(2400 Pa) and snow loads (5400 Pa)

Anti PID

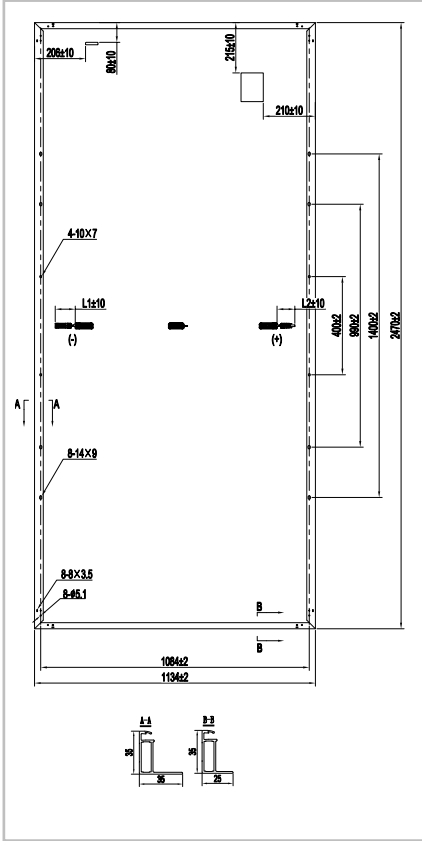
PID resistant

Comprehensive and first-rate certification system

IEC 61215:2016. IEC 61730:2016 Latest Standard ISO 9001, ISO 14001 and ISO 45001, meeting the highest international standards Strict quality control



585W/590W/595W/600W/605W



Electrical Characteristics (STC)

Module Type	HT78-18X				
Maximum Power(Pmax)	585W	590W	595W	600W	605W
Open Circuit Voltage(Voc)	53.64V	53.79V	53.94V	54.09V	54.24V
Short Circuit Current(Isc)	13.89A	13.96A	14.03A	14.10A	14.17A
Maximum Power Voltage(Vmp)	45.13V	45.28V	45.43V	45.58V	45.73V
Maximum Power Current(Imp)	12.97A	13.04A	13.11A	13.17A	13.24A
Module Efficiency	20.9%	21.1%	21.2%	21.4%	21.6%
Power Tolerance	0 ~ +5W				
Maximum System Voltage	1500V DC(IEC)				
Maximum Series Fuse Rating	25A				
Operating Temperature	-40°C to +85°C				

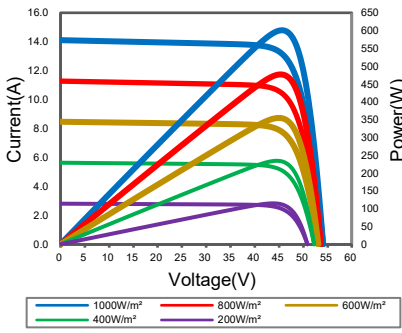
* STC: AM 1.5, Irradiance 1000W/m², module temperature 25°C

Electrical Characteristics (NMOT)

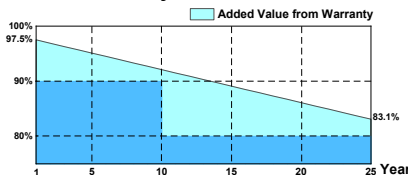
Module Type	HT78-18X				
Maximum Power(Pmax)	435W	439W	443W	446W	450W
Open Circuit Voltage(Voc)	50.84V	50.98V	51.12V	51.27V	51.41V
Short Circuit Current(Isc)	11.21A	11.27A	11.32A	11.38A	11.44A
Maximum Power Voltage(Vmp)	42.77V	42.92V	43.06V	43.20V	43.34V
Maximum Power Current(Imp)	10.17A	10.23A	10.29A	10.32A	10.38A

* NMOT: Irradiance 800W/m², ambient temperature 20°C, wind speed 1m/s

IV Curves



Warranty



12-year product warranty*

25-year warranty on power output*

* Specific information is referred to the product quality guarantee

Temperature Coefficient of Pmax	γ (Pm)	-0.33%/K
Temperature Coefficient of Voc	β (Voc)	-0.26%/K
Temperature Coefficient of Isc	α (Isc)	0.042%/K

Solar Cells	Monocrystalline 182× 91mm
No. of Cells	156 (6×26)
Dimensions	2470mm×1134mm×35mm
Weight	30.5kg
Front Glass	High transmission tempered glass
Frame	Anodized aluminum alloy
Junction Box	IP68
Cable	4mm ² (IEC) length: (+) 200mm, (-) 300mm
Connectors	MC4 / MC4 Compatible
Packaging Configuration	31 pcs/box: 496 pcs/40' HQ Container

*The module recycling should be carried out by the professional institutions at the end of module life cycle

*Copyright@2022V1 Plus Specifications are subject to change without further notification